



Sunpower Yachts 44

Ultimate Family Weekender

Our Mission

Sunpower Yachts Australia mission is to create solar electric yachting experience that is environmentally friendly to our oceans combined with the comfort and luxury of a superyacht.

Sunpower facts

<ul style="list-style-type: none">• SOLAR POWERED <p>Enjoy unlimited power from the sun that costs \$0 and does not harm the environment.</p>	<ul style="list-style-type: none">• ELECTRIC MOTORS <p>Choose your speed and enjoy the silence of electric propulsion with zero noise.</p>	<ul style="list-style-type: none">• UNLIMITED RANGE <p>The ocean is your playground when you do not need to worry about the next fuel stop.</p>
<ul style="list-style-type: none">• ZERO EMISSIONS <p>Feel good that you are only leaving behind you clean air and happy ocean life.</p>	<ul style="list-style-type: none">• SUPERYACHT LUXURY <p>Its nice to travel in comfort with style and this is a fact that the Sunpower 44 is exactly that.</p>	<ul style="list-style-type: none">• SUNPOWERED APPLIANCES <p>Use all you appliances at your leisure with no dangerous gasses to worry about.</p>

Our future of yachting is solar electric propulsion



Due to technological advances, growing customer demand and added benefits, Sunpower Yachts Australia are turning to the power of the sun.

With two luxuriously modern solar-powered models, Sunpower 44 - VIP and Sunpower 44 – Charter Version Sunpower Yachts offers environmentally sensitive products with plenty of other advantages—like the ability to sail endlessly.

“Whether you are looking for an eco-friendly yacht or not, it's hard to deny the advantages of Sunpower Yachts: The peace and quiet

SUNPOWER 44



SUNPOWER 44

THE ULTIMATE FAMILY WEEKENDER – FEEL FREE

SUNPOWER Solar Electric 44 is one of three models of this innovative yacht.

1. Sunpower VIP (openflybridge) – with a convertible hardtop is the ultimate family weekender that gives you freedom like no other. This yacht can be easily handled by the captain of the family and ensures plenty of room for your family's friends to stay over.
2. Sunpower Charter (open-flybridge) - Furthermore, this Sunpower 44 offers the possibility to upgrade to the charter version with a spacious 4 double beds with 3 bathrooms. It fits a 3.0m tender comfortably with an optional electric winch. You may also love to include the time saving hydraulic remote-controlled roof which makes lock up a simple task.
3. Sunpower Sports (no flybridge) - If heights or steps are an issue you can go for the sedan with no top deck at all. Water toys and e-bikes can be stored in doors for your next island or mainland adventure.

Specifications

Special Features include:

- **Length overall:** 13,40 m (44.0')
- **Beam overall:** 7,20 (23.6')
- **Draft:** .750 m (2.5')
- **Light displ. (EC):** 11 tons
- **Water:** 250 – 1.
- **Waste-Water:** 1 x 250
- **Fuel:** 250 – 500
- **Solar Generator:** 9,000 Wp
- **E-Motors:** 2 X 30kW / 2 x 80kW / 2 x 135kW
- **Generator:** 22 kW / 100 kW
- **Cruising Speed:** 6 – 8 kt / 6 – 10 kt
- **Top Speed:** approx. 12 kt / 15 kt
- **CE Certification:** A

The SUNPOWER YACHTS Benefits

- **100% Solar Powered**
- **Unlimited Cruising Range**
- **Lifetime Maintenance-free Motors**
- **Noiseless and Fume-less Luxury Navigation**
- **No Heat Build-up**
- **Highest Quality Materials & Craftsmanship**
- **Safest Marine Propulsion System**
- **25-year Solar Panels Warranty**
- **8-year Battery Banks Warranty**

Exterior





Interior





Double Shower

Toilet

Double Basin

Wardrobe

Office

44- Owner's Layout STB Side Cabins

Sunpower
YACHTS

44



Forward Guest Cabin

Toilet / Shower

Aft Guest Cabin

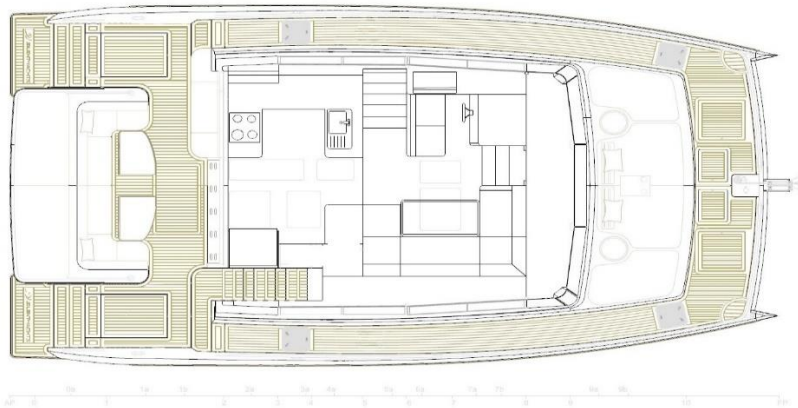
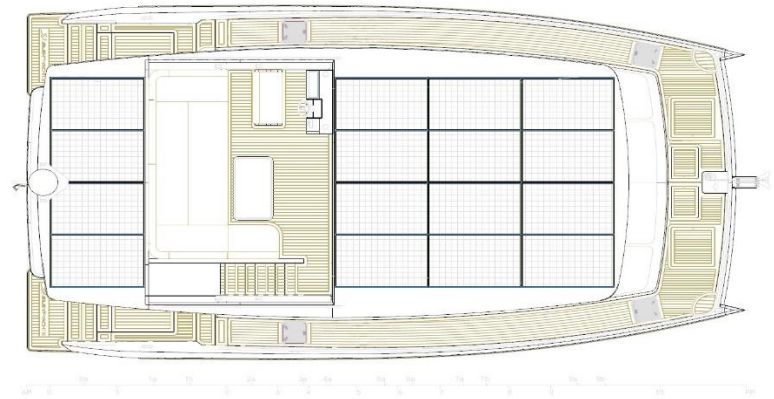
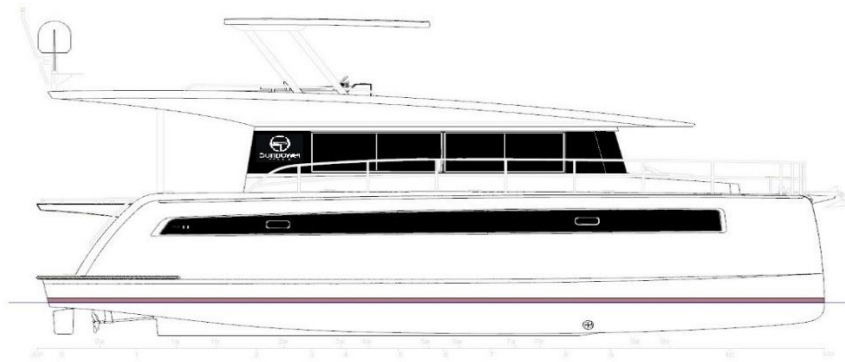
Sunpower
YACHTS

44

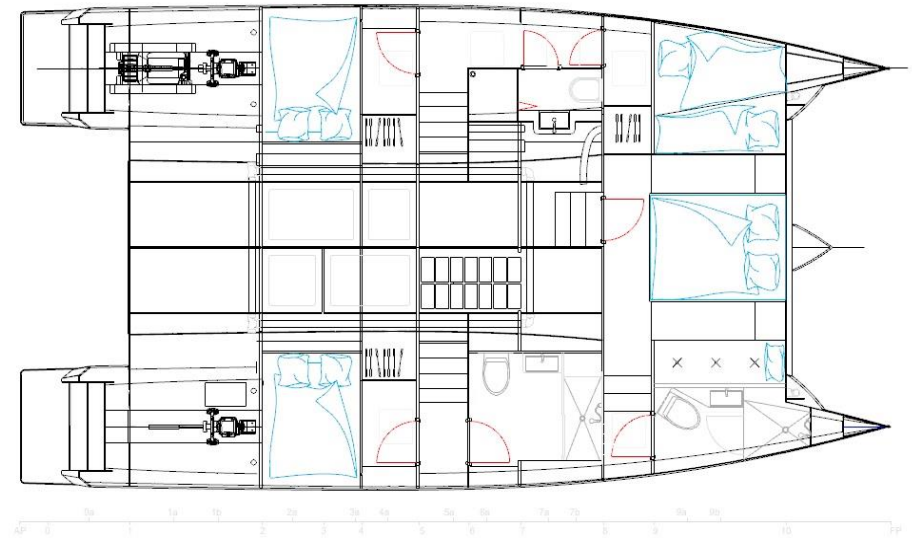
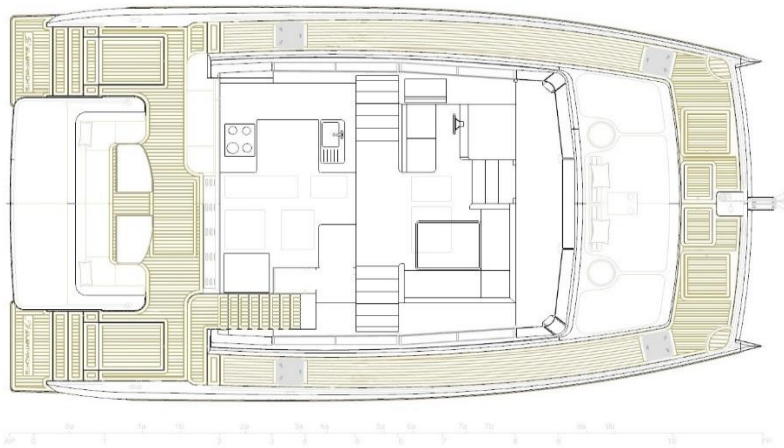
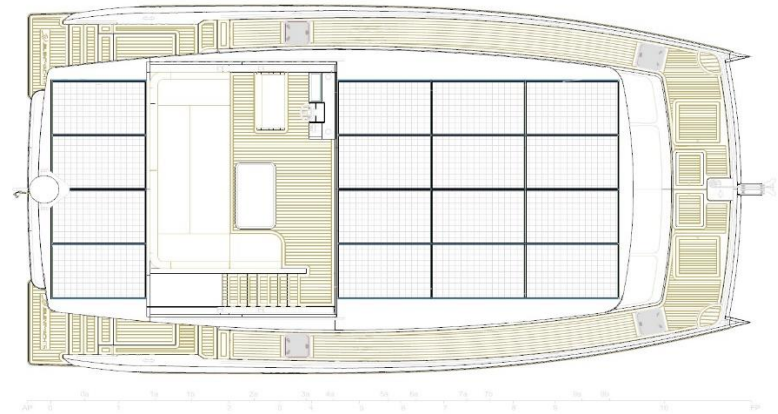
44- Owner's Layout Port Side Cabins

MODELS - Floor Plans

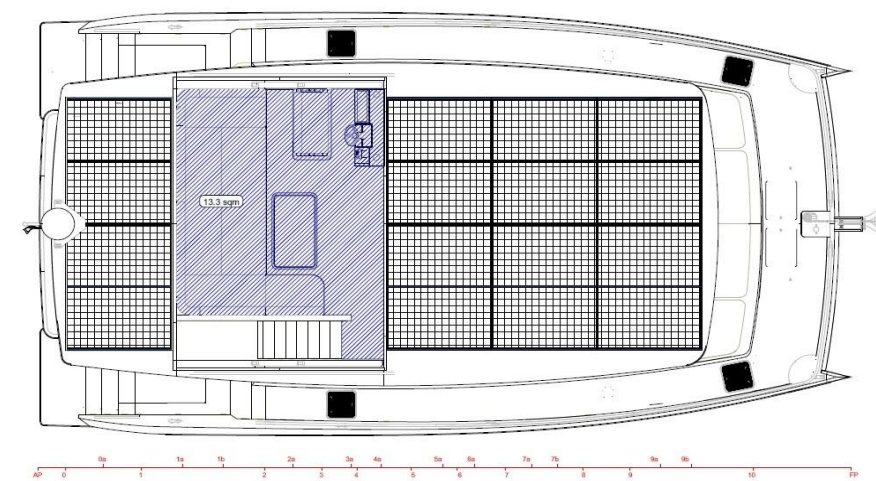
VIP OWNERS VERSION



CHARTER VERSION



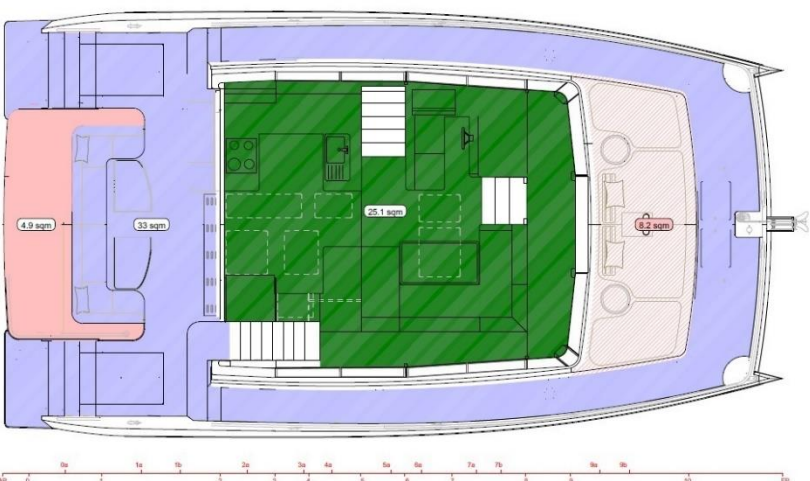
FLOOR AREA – SQM



Description
- TOTAL HATCHED AREA 13.3 SQM

FLYBRIDGE

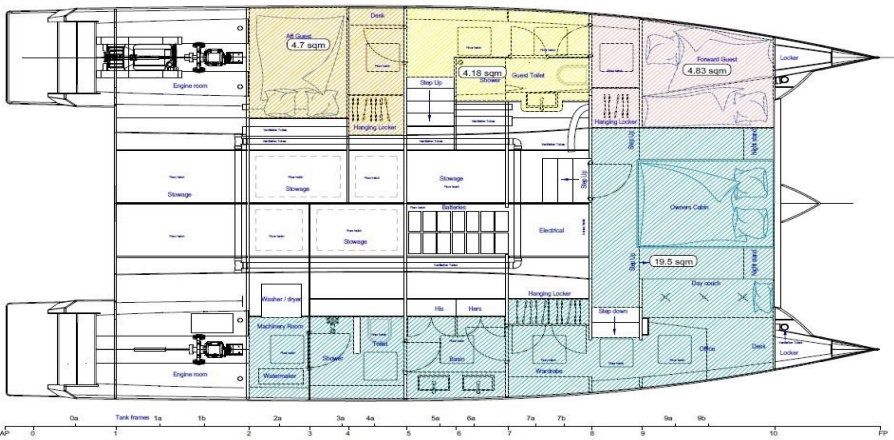
SUNPOWER
YACHTS



Description
- TOTAL HATCHED AREA 71.2 SQM

MAIN DECK

SUNPOWER
YACHTS



Description
- TOTAL HATCHED AREA 119.5 SQM

LOWER CABINS

SUNPOWER
YACHTS

Propulsion System Options

STANDARD DRIVETRAIN	DRIVETRAIN UPGRADE	DRIVETRAIN UPGRADE
CRUISER 2x 30 kW E-Motors on Shafts 30 kWh Lithium Battery 20 kW Generator	E-POWER 2x 80 kW E-Motors on Shafts 70 kWh Lithium Battery 100 kW Generator	E-POWER PLUS 2x 135 kW E-Motors on Shafts 140 kWh Lithium Battery 100 kW Generator
Cruising Speed 6-8 kt Top Speed 9-10 kt	Cruising Speed 6-8 kt Top Speed 12-13kt	Cruising Speed 6-8 kt Top Speed 14-15 kt